



VNE555 - VNY510

Rating Definition

Prime Power - VNE555

Rating corresponds to ISO Standard Power for continuous operation. It is applicable for supplying electrical power at variable load for an unlimited number of hours instead of commercially purchase power. A 10% overload capability for governing purpose is available for this rating .

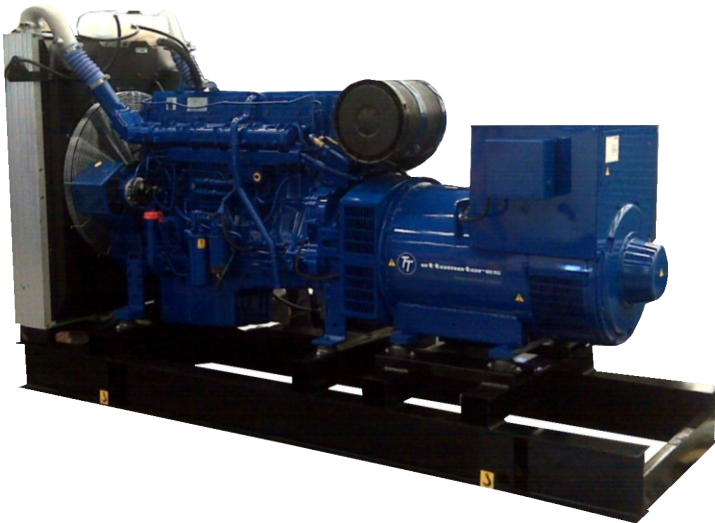
Standby Power - Model VNY510

Is applicable for supplying standby electrical power at variable load in areas with well establish electrical networks in the event of normal failure.

No overload capavility is available for this rating 1hp = 1kW-1.36

Note: the engine performance corresponds to ISO3046, BS5514 and DIN 6217.

Power output guaranteed within 0 to +2% att rated ambient conditions at delivery, Ratings are based on ISO8528.



Output Ratings				0.8 p.f)
Frequency	Models	Voltage	kVA	kWe
50 Hz	VNE555	380-415V	505 (125/40 ris ϵ)	404
60 Hz	VNY510	440-220V	642 (163/27 ris ϵ)	513

Technical data		
Engine Model:	TAD1641GE	
Number of Cylinders:	6 In-line	
Bore:mm (in)	144 (5.67)	
Stroke:mm (in)	165 (6.50)	
Displacement:lt(s(in³))	16.12 (984)	
Compression ratio:	16.5:1	
Performance	1500rpm-PRIME	1800rpm-Standby
With Fan:kW(hp)	430 (585)	546 (743)
Lubrication system	1500rpm-PRIME	1800rpm-Standby
Oil consumption:lt/h(gal/h)	0.10 (0.026)	0.12 (0.032)
Total oil incl filters:liter)	48	48
Fuel system	1500rpm-PRIME	1800rpm-Standby
100% load g/kWh(lb/hph)	199 (0.322)	210 (0.340)
Intake & exhaust system	1500rpm-PRIME	1800rpm-Standby
Air consum.m³/min (cfm)	35.5 (1254)	45.8 (1617)
Max.restriction:kP (In wc)	5 (20.1)	5 (20.1)
Heat rejection to exhaust:W (BTU/min)	326 (18539)	442(25136)
Exhaust gas temp:C^o (°F)	443 (829)	479 (893)
Max.back-pressure:kP (In wc)	10 (40.2)	10 (40.2)
Exhaust gas flow:m³/min (cfm)	85.0 (3002)	110.4 (3899)
Cooling system	1500rpm-PRIME	1800rpm-Standby
Heat rejection rad from engine: kW (BTU/min)	18 (1024)	24 (1365)
Fan consumption:kW(hp)	11 (15)	19 (26)
Generating Set Model:	VNE555	VNY510
Alternator Model	HCI534E	HCI534D
Insulation System:	Class H	
Control System:	Self exited	
AVR	MX341	

Dimensions and Weights			
Length:cm	Width:cm	Height:cm	VNE555
340	127	189	Dry: 3408 kdsWet: 3478 kgs
			VNY510
			Dry: 3258 kdsWet: 3328 kgs

Inyen, S.A. de C.V.
carlos.vargas@inyen.com.mx
ventas@inyen.com.mx
ventas3@inyen.com.mx